

GH Series

GH Series



GH Series breaker

Product Description

Eaton's GH Series breaker offers the benefits of hydraulic-magnetic protection in a compact, economical design. Heinemann brand breakers have proven their ability by performing in harsh environment installations, indoor and outdoor, requiring a compact, environmentally stable breaker rated to 100 amperes at 480 Vac.

Application Description

Because of their ability to furnish both close-rated locked rotor protection and running overcurrent protection without derating in extreme and highly variable ambient conditions, the Series GH breakers are popular in a variety of industries — air conditioning, electric heating, computer main frame and central processing, transportation and many others. In addition, since the GH Series utilizes hydraulic-magnetic technology, you can specify a breaker to match your particular application.

- Shock — Tested in accordance with MIL-STD-202, Method 213, Test Condition I (100G's at 6 milliseconds).
- Vibration — Tested in accordance with MIL-STD-202, Method 204, 10 to 500 Hz, 0.06-inch total excursion on three mutually perpendicular planes. Shock and vibration tests apply to time delay breakers only and are performed with units carrying full rated current.
- Life — 10,000 cycles.
- Approximate weights GH3 — 3.3 lbs. (14.96 kg)
- Dielectric strength — 1960 Vac.
- Insulation resistance (internal resistance) — Impedance or internal resistance across breaker at full rated load.

Features, Benefits and Functions

- Fungus and humidity resistance — Provided in accordance with MIL-STD-202 by treating all ferrous parts with a special moisture-resistant finish and by using special springs and fungus-resistant cases, covers and handles.



Technical Data

Dimensions in Inches and (mm)

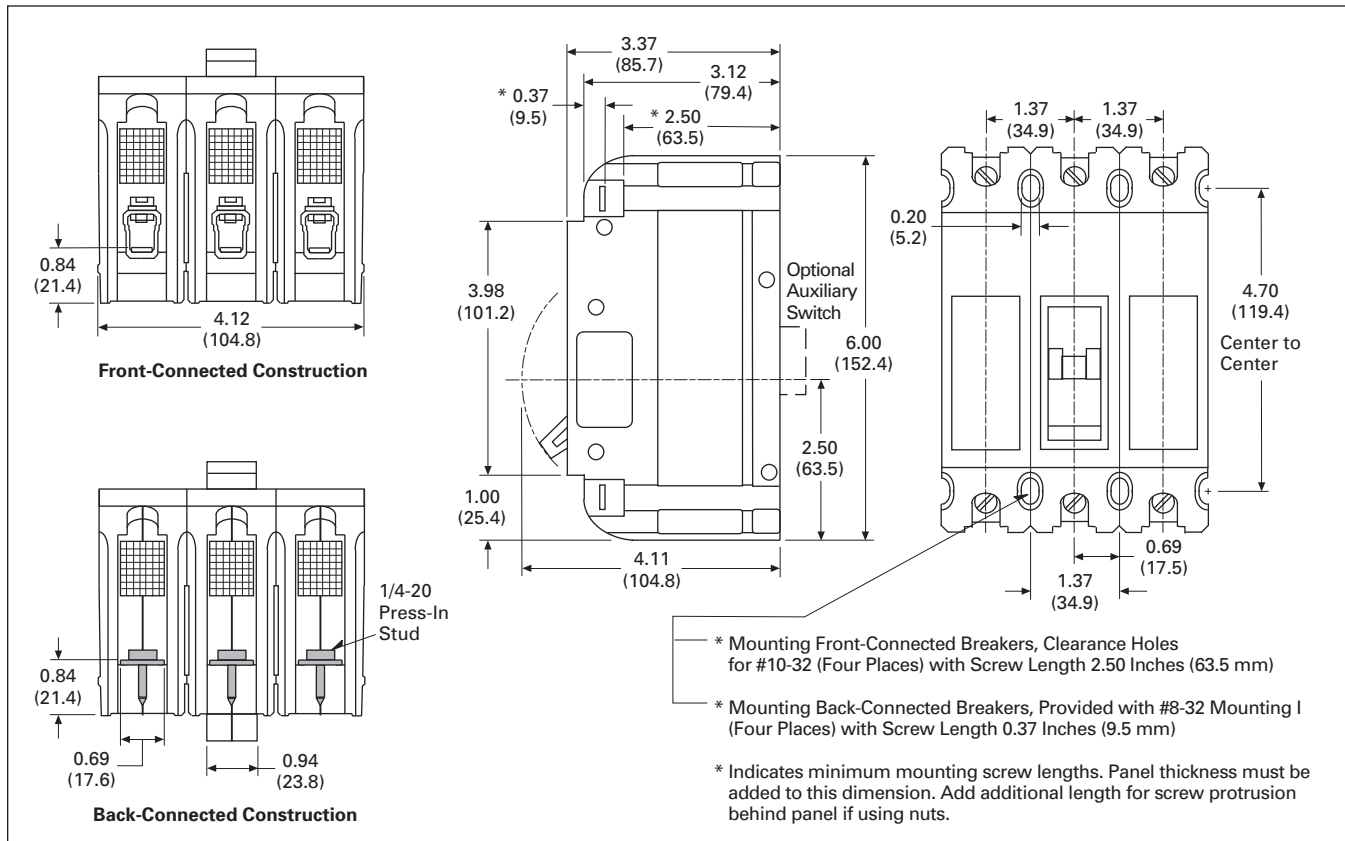


Figure 11-63. GH Basic Dimensions

**GH Series**

**Product Selection**

**Standard Breaker Configurations**

The GH Series can be ordered in a number of standard configurations utilizing the table to the right. Once you create your catalog number, you can contact our Technical Resource Center for verification and quotations.

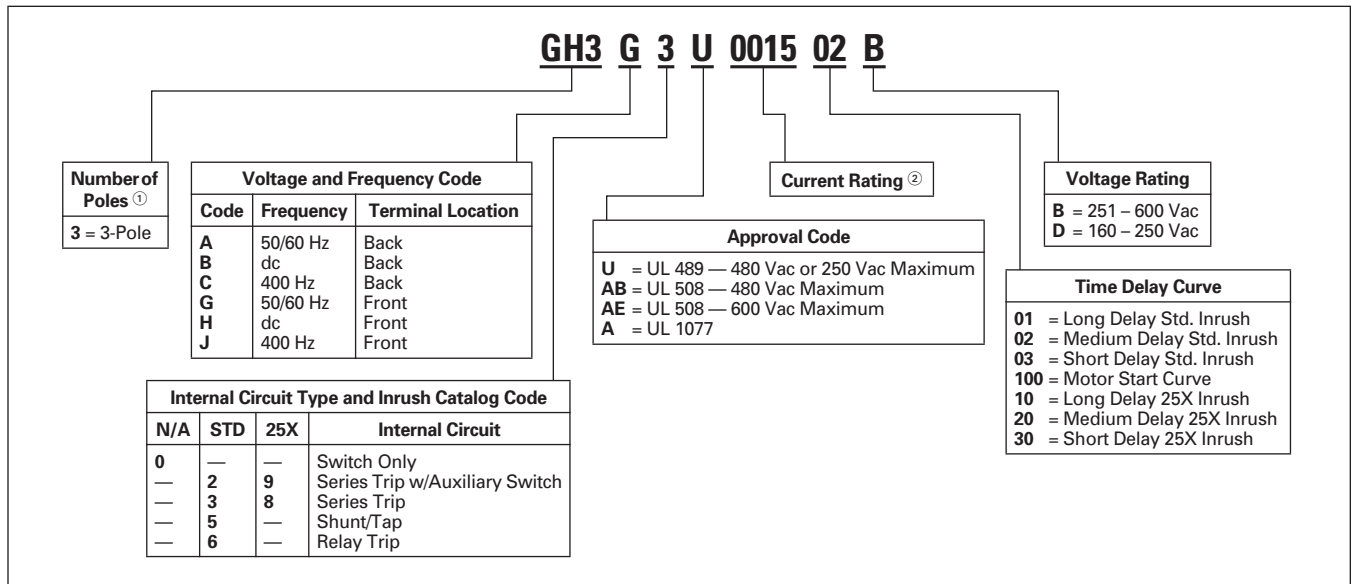
**Custom Applications**

The GH Series is also available in a number of custom configurations to meet your specific application needs. To order a special application breaker, you can visit our Web site at [www.eaton.com/heinemann](http://www.eaton.com/heinemann) for a list of custom modifications and information on how to obtain a proprietary catalog number. You may also contact the Technical Resource Center for application information and breaker selection assistance.

**Table 11-95. Standard Product Offering**

Poles	Current (Amperes)	Curve	Catalog Number	Price U.S. \$
3	15	2	GH3A3U001502B	
3	15	3	GH3A3U001503B	
3	20	2	GH3A3U002002B	
3	20	3	GH3A3U002003B	
3	30	2	GH3A3U003002B	
3	30	3	GH3A3U003003B	
3	50	3	GH3A3U005002B	
3	50	2	GH3A3U005003B	
3	60	3	GH3A3U006002B	
3	60	2	GH3A3U006003B	
3	100	3	GH3A3U010002B	
3	100	2	GH3A3U010003B	

**Table 11-96. GH Catalog Numbering System**



① Style includes Toggle Handle with Black ON/OFF handle color.

② Enter the four digit current rating. For example, use code "0015" for a 15 ampere current rating. GH Series breakers are available from 15 – 100 amperes.